

ULTRACUT 40E2

Portable Inverter Air Plasma Cutter

Inverter High Frequency 230V (50/60Hz) with variable output control. Maximum 40A output at 60% duty cycle.

AMH[®]

Cuts stainless steel, copper, iron and aluminium up to 1/2 inch (13mm) thick.
Severe cut 5/8 inch thick (16mm)

Metal plates with different thickness can be curve-cut into any shape.

“Easy touch” smooth start.

Air regulator with water separator for longer tip life included.

Fan assisted air-cooling with temperature overload protection.

Comes with “Back Up Pack” of tips and nozzles.

Compact cabinet
16x 6x 12in. (415x 155x 315mm).

Lightweight
(only 20lbs, 9kg).

Fully compliant with:
EMC directive 73/23/EEC and 89/336/EEC.
European Standard: EN/IEC60974-1



No. Reference UltraCut 40E2: 28.PCA40E



State of the art technology at your finger tips

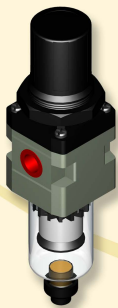
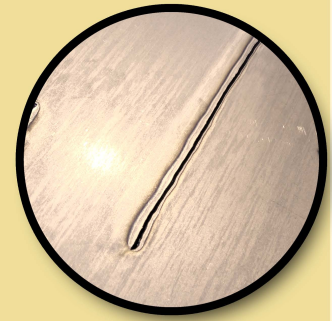
ULTRACUT 40E2

Plasma Cutting Process

Plasma cutting is a process that is used to cut steel and other metals of different thicknesses (or sometimes other materials) using a plasma torch. In this process, compressed air is blown at high speed out of a nozzle; at the same time an electrical arc is formed through that gas from the nozzle to the surface being cut, turning some of that gas to plasma. The plasma is sufficiently hot to melt the metal being cut and moves sufficiently fast to blow molten metal away from the cut.

The HF Contact type uses a high-frequency, high-voltage spark to ionise the air through the torch head and initiate an arc. These require the torch to be in contact with the job material when starting.

Plasma is an effective means of cutting thin and thick materials alike. Since plasma cutters produce a very hot and very localized "cone" to cut with, they are extremely useful for cutting sheet metal in curved or angled shapes.



The Ultracut 40E2 includes an air filter regulator to ensure clean and dry air, but also steady pressure of the air source.

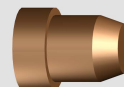
Specifications:

Rating flow: 550 L/min
 Applicable pressure range: 0 ~ 1,0 Mpa
 Applicable temperature: 0 ~ 60°C

Accessories



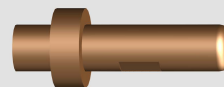
Spare ceramic cup (diffuser)
 (Reference: 19.707.00.02E)



Spare cooper tip
 (Reference: 05.707.00.04E)



Spare ceramic ring
 (Reference: 19.707.00.04E)



Spare electrode
 (Reference: 04.707.00.04E)



Cutting gun cable assembly, ground clamp cable assembly, filter regulator & reinforced hose included.

Technical information

Input voltage.....	1~230VAC ± 15%
Input frequency.....	50Hz /60Hz
Input capacitance.....	6.4 KVA
No-load voltage.....	310V
Rated input current.....	32.6A
Current range.....	20-40A
Rated duty cycle.....	40A @ 25%, 96V
Efficiency.....	85
Power factor.....	0.7
Insulation class.....	F
Protection class.....	IP21S
Arc starting.....	HF-Touch
Quality cutting thickness.....	8mm
Max. cutting thickness.....	13mm
Weight.....	9kg (20lbs)
Size (Lx Wx H).....	415x 155x 315mm (16x 6x 12in)

AMH Canada Ltd, 391 rue Saint-Jean-Baptiste Est, Rimouski (Québec) Canada G5L 1Z2
 CANADA and other countries Tel: (418) 724-4105 • EUROPE Tel: ++33 616 995 408 • USA Tel: (330) 519-5874

